

Instructions for installing “Carls Army Journey” into Google Earth

Save the file somewhere.

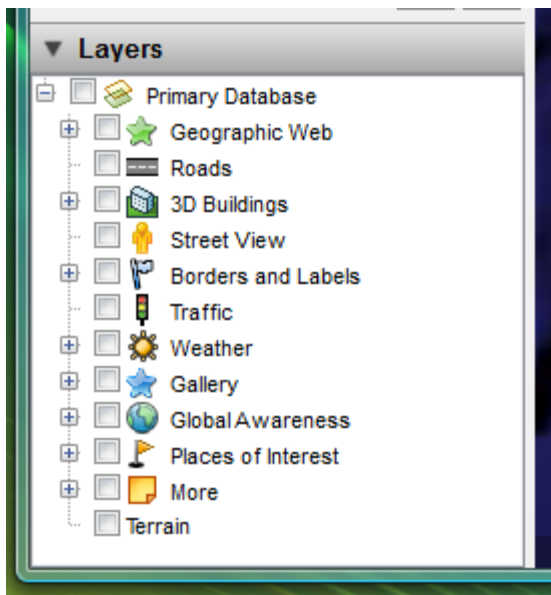
The file is named “Carl's Army Journey.kmz”. Save this file somewhere in your “Documents” folder, and remember where you save it, you’ll need to remember where it is in order to import it later.

Setup Google Earth

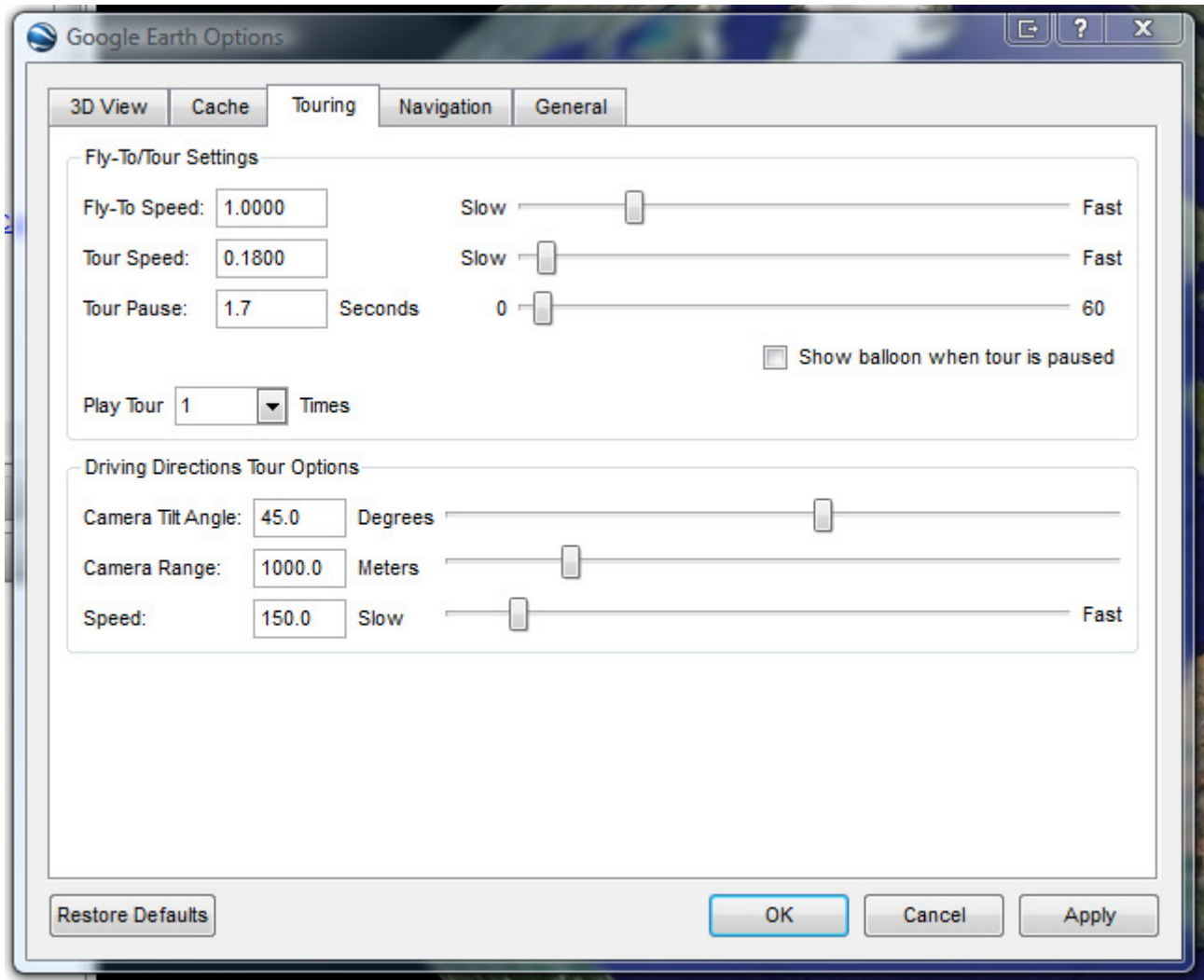
To reduce clutter in Google Earth while viewing your Army Journal, you may want to de-select all the layers so that only the Army Journal items show up. If the “Layers” toolbar is not expanded, and looks like this at the bottom left of your Google Earth window:



Click the triangle to the left of the word “Layers” to expand it. Then deselect all the items in that list so it looks like this:



You may also want to speed up the “fly-to” speed when going from place-to-place. The default speed is pretty slow. If so, from the “Tools” menu, select “Options...”. Click on the “Touring” tab at the top of that dialog, and set the “Fly-To Speed” to about 1.0000. Then click “OK”.



Import the file into Google Earth

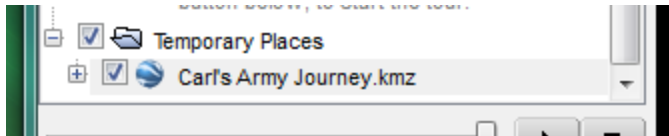
You can use either of the following methods to open placemarks and folders saved to the file system on your computer's hard drive.

- From the Google Earth “File” menu, select “Open...”. Navigate to the folder on your computer that contains the KMZ or KML data you want to open in Google Earth. Select the file and click the Open button. The folder or placemark appears beneath the Temporary Places folder and the 3D viewer flies to the view set for the folder or placemark (if any).

OR

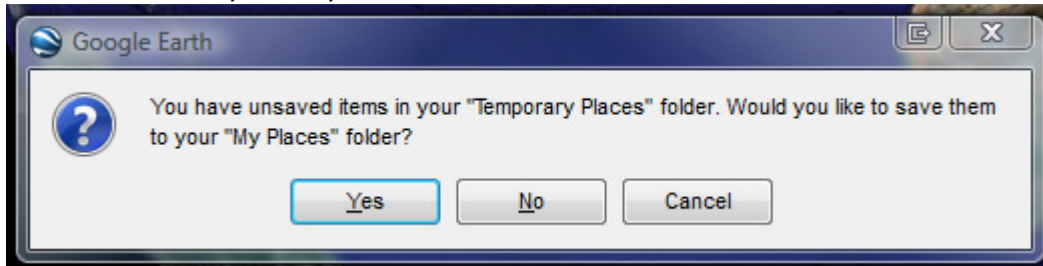
- Locate the file you want to open. Once you have located the file on your computer, you can simply drag and drop the KMZ file over the Places panel or 3D viewer. The 3D viewer load the file and flies to the view set for the folder or placemark (if any).

When you first import the placemarks file, it will show up in your “Temporary Places” folder:



Saving the data in Google Earth

When you exit Google Earth, it will ask you if you want to move the placemarks from your "Temporary Places" folder into your "My Places" folder:



Answer "Yes" to this, and your placemark file will be saved.